

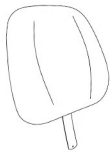
PRODUCT 24/7 ASSEMBLY INSTRUCTION

Parts Listing

A
Long Screws for
Mechanism
4 pcs



C
Chair Back
1 Unit



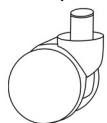
E
Chair Arms &
Tension Knob
1 Pair



G
Gas Cylinder
With Bellows
1 Unit



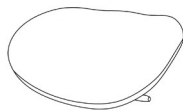
I
Casters
5 pcs



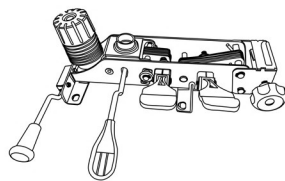
B
Large Washer for
Mechanism
4 pcs



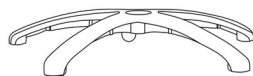
D
Chair Seat with
Slider attached
1 Unit



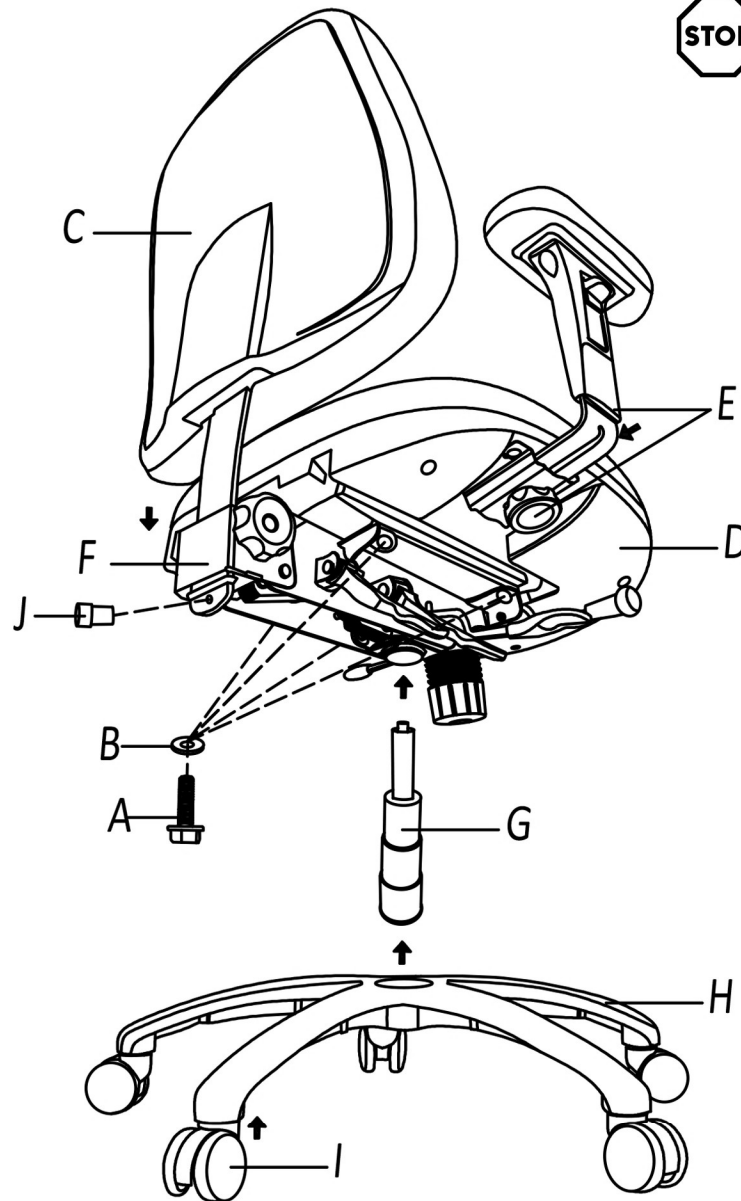
F
Seat Mechanism
1 Unit



H
Aluminum Base
1 Unit



J
Plastic Stopper
1 Unit



Assembly Instructions

Tools needed : Phillips Head Screwdriver

Please read all instructions before assembly.

Step 1 : Insert Casters (I) into Aluminum base (H)

Step 2 : Insert Gas Cylinder (G) into Aluminum base (H)

Step 3 : Place the Chair Seat With Slider Attached (D) upside down on flat surface and align holes in bottom of seat with four holes on Seat Mechanism (F). Attach Seat Mechanism (F) by using Long screws (A) and Large Washers (B). Tighten with phillips head screwdriver

Step 4 : Attach the two Chair Arms (E) by sliding the Chair Arms (F) into the pre-mounted brackets and inserting the two tension knobs to secure

Step 5 : Insert Chair Back (C) into rear slot of mechanism, then insert the plastic stopper (J) into bottom hole of back bar on Chair Back (C). Then tighten the tension knob by hand until Chair back (C) is secure.

Step 6 : Place center hole of Seat Mechanism (F) onto Gas Cylinder (G). Press down firmly on Chair Seat (D) to secure to Aluminum Base (H)

WEIGHT CAPACITY : 400 lbs.

Assmely Notes :

During assembly, hand tighten screw only when all screws are in place, you may then tighten all screws completely.

CAUTION :

1. Do not use this chair as a step ladder.
2. Check for loose screws and tighten them every 6 months.