



MATERIAALIT

Runko kromattua tai harmaata teräsputkea. Istuin pehmustettua ja verhoiltua vaneria.



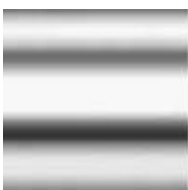
BELIVE

■ NOWY STYL GROUP® ■

VERHOILUVAIHTOEHDOT

ryhmä 1: Bondai, Kaiman, Lucia, Sempre
ryhmä 2: Contract, Era, Nexus, Valenciam, Xtreme
ryhmä 3: Oxygen, Silvertex, Flex
ryhmä 4: Blazer, Fame, Synergy
ryhmä 5: Fine Leather Le, Fine Leather SD, Fine Leather Q

METALLIVÄRIT



CR
Chrome



RAL 9006
Al II

JALKAVAIHTOEHDOT

Nelipistejalka. Lenkkijalka.

PINOTTAVUUS

Max. 4 tuolia.

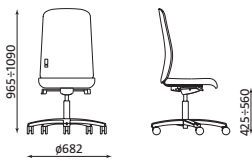
LISÄVAIHTOEHDOT

Käsinojat. Huopatallat.

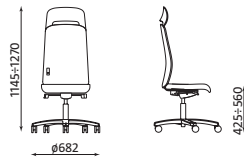
TAKUU

Tuotteilla on 5 vuoden takuu.

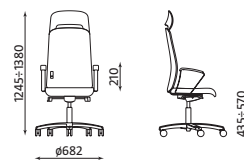
1. Dimensions/Weight



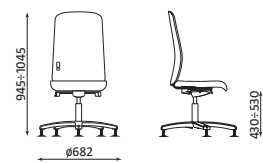
BELIVE 106
weight: 16,5 kg



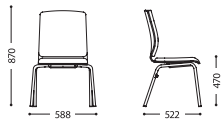
BELIVE 206
weight: 17,3 kg



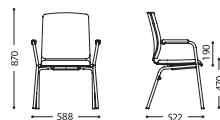
BELIVE 546
weight: 21,1 kg



BELIVE 107
weight: 16,3 kg



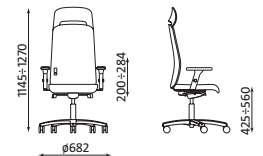
BELIVE 302
weight: 8,3 kg



BELIVE 312
weight: 9,6 kg



BELIVE 412
weight: 10,5 kg



**EXAMPLE OF BELIVE
WITH 3-D ARMRESTS**

2. Materials/Versions

2.1. Base

Swivel chairs – five star polished aluminum base (chromium version) or ALU (RAL9006) powder coated. Protective plastic covers.

Visitor chair cantilever – steel tube
Ø 22×2,5 mm/Ø 22×2,0 mm.

Visitor chair 4-leg – steel tube
Ø 22×2,5/Ø 22×2,0 mm.

In visitor chair the frame can be chromium plated (galvanic coating) or powder coated in ALU (RAL9006).

2.2. Mechanism

REVO synchronous mechanism – functions:

- synchronous tilting of the seat (9°) and backrest (21°),
- negative seat inclination (5°),
- possibility of backrest lock in 5 positions,
- seat depth adjustment in 6 positions (adjustment range 65 mm),
- adjustable backrest tilt force,
- Anti-Shock – the feature controls the backrest to avoid hitting a user's back,
- chair height adjustable with gas lift.

S1D permanent contact mechanism (for conference chairs) – functions:

- free floating,
- backrest tilting 20°,
- backrest lock in an upright position,
- backrest tilt force adjustment by user's weight,
- backrest tilting range limited with a knob,
- seat height adjustment with pneumatic lift,
- Anti-Shock – the feature controls the backrest to avoid hitting a user's back.

2.3. Castors/Glides

Swivel chair – double-link castors for hard or soft floors Ø 65 mm, with load-controlled braking mechanism. Optionally castors can be chromium plated for hard or soft floors. Castors conform to standard EN-12529.

Glides available for hard or soft floors.

Visitor chair – glides for soft floors or self-levelling glides for hard or soft floors. When self-levelling glides are used product height increases by approx. 20 mm.

2.4. Seat, backrest and headrest

Swivel chair

Seat – structure made from 8-layer beech plywood (thickness 11 mm) covered with injected foam (thickness 40 mm).

Backrest – upholstered on both sides, structure made from composite chipboard (thickness 12 mm) covered with foam (front of the backrest: density 40 kg/m³, thickness 20 mm, back of the backrest: density 40 kg/m³, thickness 9 mm). Lumbar support mechanism: backrest can be fitted with pneumatic lumbar support mechanism for the adjustment of lumbar support cushion inflation range.

Headrest – fixed, upholstered on both sides. Structure made from beech plywood (thickness 10 mm) covered with foam, front of the headrest: density 40 kg/m³, thickness 20 mm, back of the headrest: density 40 kg/m³, thickness 9 mm.

Visitor chair

Main frame – shell made from 9-layer beech plywood (thickness 9 mm) covered with foam (density: 21 kg/m³, thickness: 9 mm).

Seat – seat cushion frame made from 3-layer plywood (thickness 3,6 mm) covered with foam (density: 40 kg/m³, thickness: 30 mm). Seat is fitted with a soft upholstered stacking cushion.

Backrest – backrest cushion frame made from 3-layer plywood (thickness 3,6 mm) covered with foam (density: 35 kg/m³, thickness: 25 mm).

3. Armrests

4-D, 3-D, height adjustable or fixed armrests.

Swivel chair:

- **height adjustable** armrests. Armpads made from PU. Chromium plated or black metal frame, the remaining components made from PA + GF. Adjustment range: 80 mm.
- **3-D** adjustable armrests. Chromium plated or black metal frame, the remaining components made from PA + GF. Pads made from PU. Adjustment range: height 80 mm, pad rotation ± 25°, pad adjustment front-back: 50 mm.
- **4-D** adjustable armrests. Carcass – cast aluminum, the remaining components made from PA + GF, pads made from PU.

Adjustment range: height 80 mm, pad adjustment sideways (right-left) 50 mm, pad adjustment front-back 40 mm, width adjustment 50 mm.

- **fixed** armrests: frame made from flat bar with upholstered pads. Armrests frame is chromium plated (galvanic coating) or powder coated in ALU (RAL9006).

Armrest pads are upholstered in black leather. If your choice of overall upholstery colour is other than black, the armrests are upholstered in leather of the same colour to match the overall effect where applicable. This rule does not concern artificial leather: Kaiman, Valencia, Silvertex and fine leather. In these cases, the armrests are upholstered in the same finish as the chair's overall upholstery.

Visitor chair:

- armrests with wooden pads integrated with chair frame made from steel tube Ø 22×2,5 mm.

15 wood colours available: Beech 1.007, Orange 1.010, Walnut 1.031, Calvados 1.025, Wenge 1.033, Colombo 1.032, Havana 1.076, Black 1.043, Alder 1.040, Cognac 1.008, Mahogany 1.016, Cherry 1.042, Palisander 1.023, Beech grey 1.06R, Slate 1.06S

4. Packaging

Swivel chair – 1 piece per box (partially assembled, delivered in L-shape box).

Visitor chair – 1 piece per box (assembled).

5. Technical regulations, certificates and quality marks

GS Safety Certificate.

Remodex (durability certificate) – approvals compliant with: PN-EN 13761; PN-EN 1278; PN-EN 1022; PN-EN 15373 level 2.

Ergonomic Assessment Report by Nofer Institute of Occupational Medicine compliant with PN-EN 1335-1 – for swivel chairs.