

MATERIAALIT

Runko kromattua tai mustaa teräsputkea. Istuin taivutettua, petsattua pyökkivaneria. Verhoilematon, istuinverhoiltu, istuin-selkäterhoiltu tai ympäriverhoiltu istuin.

VERHOILUVAIHTOEHDOT

ryhmä 1: Kaiman, Lucia

ryhmä 2: Conctract, Era, Nexus, Valencia, Xtremmer

ryhmä 3: Oxygen, Silververtex

ryhmä 4: Blazer, Fame, Synergy

ryhmä 5: Fine Leather LE, Fine Leather SD,
Fine Leather Q



CONVERSA

NOWY STYL GROUP®

PINOTTAVUUS

Max. 4 tuolia.

LISÄVAIHTOEHDOT

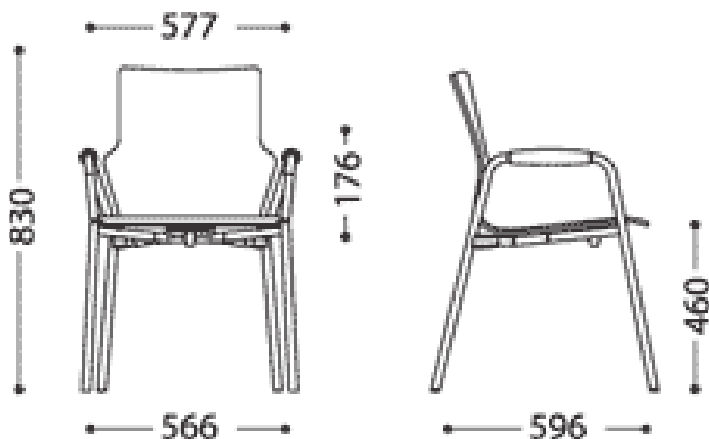
Nelipistejalka pyörillä. Lenkkijalka. Kaksi erilaista käsinojamallia. Huopatallat.

MITAT

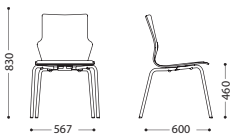
Koot vaihtelevat tuolin mallin mukaan.

TAKUU

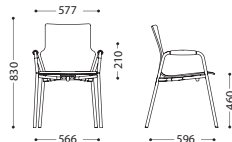
Tuotteilla on 3 vuoden takuu.



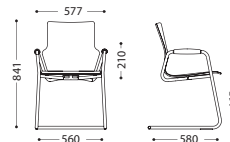
1. Dimensions/Weight



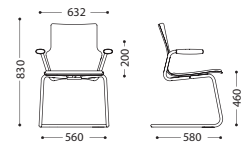
CONVERSA 10
weight: 5,35 kg



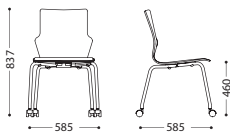
CONVERSA 11
weight: 6,85 kg



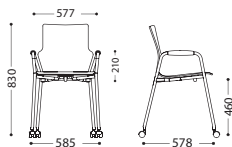
CONVERSA 21
weight: 8,1 kg



CONVERSA 31
weight: 9,3 kg



CONVERSA 40
weight: 5,85 kg



CONVERSA 41
weight: 7,35 kg

2. Materials/Versions

2.1. Frame – visitor chair

4-leg model – steel tube Ø 22×2,0 mm.

4-leg with armrests – steel tube Ø 22×2,0 mm.

Cantilever with armrests – steel tube Ø 22×1,5 mm.

Cantilever with open armrests – steel tube Ø 22×2 mm.

Surface finish: powder coated or chromium plated.

Stacking: up to 4 pieces (visitor chairs).

Models: 4-leg, 4-leg with armrests, cantilever with armrests, cantilever with open armrests.

2.2. Seat and backrest

The following models are available for Conversa line:

Wooden seat shell – made from 9-layer beech plywood – thickness 9 mm.

Upholstered seat pad – seat pad made from 9-layer beech plywood (thickness 3,5 mm) and foam (density 25 kg/m³, thickness 15 mm).

Separately upholstered seat pad and backrest pads – seat made from 9-layer beech plywood (thickness 3,5 mm) and foam (density 25 kg/m³, thickness 15 mm). Backrest made from 9-layer beech plywood (thickness 3,5 mm) and foam (density 21 kg/m³, thickness 10 mm).

Front part of the chair (seat and backrest) upholstered – seat and backrest made from 9-layer beech plywood (thickness 3,5 mm) and foam (density 21 kg/m³, thickness 10 mm).

Fully upholstered seat and backrest – foam weight 25 kg/m³, thickness 10 mm.

15 wood colours available (for all wooden elements):

Beech 1.007, Orange 1.010, Walnut 1.031, Calvados 1.025, Wenge 1.033, Colombo 1.032, Havana 1.076, Black 1.043, Alder 1.040, Cognac 1.008, Mahogany 1.016, Cherry 1.042, Palisander 1.023, Beech grey 1.06R, Slate 1.06S.

2.3. Armrests

PU pad – open and closed armrests.

2.4. Glides/casters

Visitor chair – glides for soft or hard floors.

3. Packaging

10 & 11 – max. 4 pieces per box (assembled).

21 – max. 3 pieces per box (assembled).

31 – max. 3 pieces per box (assembled).

40 & 41 – max. 4 pieces per box (assembled).

4. Technical regulations, certificates and quality marks

Remodex (durability certificate) – approvals compliant with: EN 13761, EN 1728, EN 1022, EN 15373 level 2.

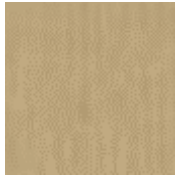
GS – visitor chairs on glides (4-leg and cantilever).

VÄRIVAIHTOEHDOT

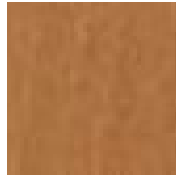
PETSATTU



1.007
Beech



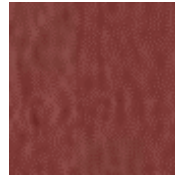
1.040
Alder



1.010
Orange



1.008
Cognac



1.016
Mahogany



1.042
Cherry



1.023
Palisander



1.031
Walnut



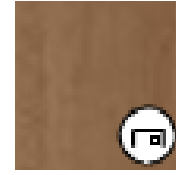
1.033
Wenge



1.043
Black



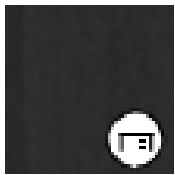
1.032
Colombo



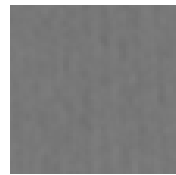
1.076
Havana



1.025
Calvados



1.06R
Beech grey



1.06S
Slate