



MATERIAALIT

Runko kromattua tai harmaata teräsputkea. Istuin taivutettua pyökkivaneria; laminoitu tai petsattu. Verhoilematon tai istuin-selkäverhoiltu.

STACCATO

NOWY STYL GROUP®

VERHOILUVAIHTOEHDOT

ryhmä 1: Bondai, Kaiman, Lucia
ryhmä 2: Conctract, Era, Microfibra, Nexus,
Valencia, Xtreme
ryhmä 3: King L Elast, Oxygen, Silvertex, Flex
ryhmä 4: Blazer, Fame, Synergy
ryhmä 5: Fine Leather LE, Fine Leather SD,
Fine Leather Q

PINOTTAVUUS

Max. 10 tuolia.

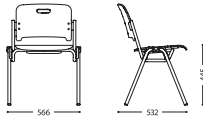
LISÄVARUSTEET

Käsinojat. Kirjoitustaso.
Kuljetuskärry. Rivikytkentä.
Korkea selkänoja. Kantoreikä.
Kokoontaitettava istuin.

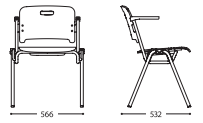
TAKUU

Tuotteilla on 2 vuoden takuu.

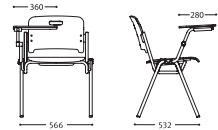
1. Dimensions/Weight



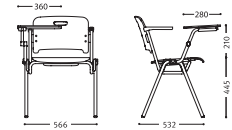
STACCATO 10
weight: 6,9 kg



STACCATO 11
weight: 7,7 kg



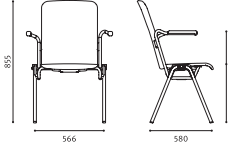
STACCATO 20
weight: 8,5 kg



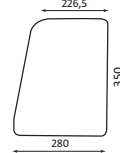
STACCATO 21
weight: 8,9 kg



STACCATO 30
weight: 8,5 kg



STACCATO 31
weight: 8,9 kg



STACCATO TABLET

2. Materials/Versions

2.1. Frame

4-leg - steel tube $\varnothing 22 \times 2,0$ mm, $\varnothing 20 \times 2,5$ mm.
Surface finish: powder coated or chromium plated.

Models - 4-leg, 4-leg with armrests, 4-leg with writing tablet, 4-leg with writing tablet and armrests.

Stacking: up to 10 pieces (4 pieces for models 304 and 314).

2.2. Seat and backrest

The following models are available for Staccato line:

Wooden seat shell - made from 7-layer beech plywood (thickness 10,5 mm). Backrest made from 6-layer beech plywood (thickness 8,5 mm).

15 wood colours available (for all wooden elements):

Beech 1.007, Orange 1.010, Walnut 1.031, Calvados 1.025, Wenge 1.033, Colombo 1.032, Havana 1.076, Black 1.043, Alder 1.040, Cognac 1.008, Mahogany 1.016, Cherry 1.042, Palisander 1.023, Beech grey 1.06R, Slate 1.06S.

Upholstered seat and backrest pads - made from 3-layer beech plywood (thickness 4,5 mm), and foam (density 35 kg/m³, thickness 15 mm).

Fully upholstered seat and backrest - seat made from 6-layer beech plywood (thickness 8,5 mm) and foam (density 40 kg/m³, thickness 40 mm). Backrest made from 6-layer beech plywood (thickness 9 mm) and foam (density 40 kg/m³, thickness 20 mm and 10 mm).

Optionally:

- foldable seat,
- laminated wood components (with non-laminated plywood edges, protected with wax).

2.3 Armrests

Foldable armrests made from steel and PU (polyurethane).

Also available armrests with wooden pads (not foldable, applicable to version 314).

2.4. Glides

For soft or hard floors.

Optionally self-levelling glides for soft or hard floors (height increased by 20 mm).

3. Packaging

10 - max. 4 pieces per box (assembled).

20-1 piece per box (assembled); 4 pieces (when tablet is disassembled).

30 - max. 4 pieces per box (assembled).

4. Technical regulations, certificates and quality marks

Remodex (durability certificate) - approvals compliant with: EN 13761, EN 1728, EN 1022, EN 15373 level 2.

Remodex (durability certificate) - approvals compliant with: EN 13761, EN 1022 - for models STACCATO 304 and STACCATO 314.

VÄRIVAIHTOEHDOT

LAMINAATIT



H1733
Mainau Birch



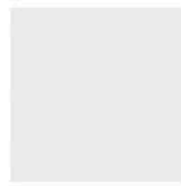
H3005
Grey Beige Zabrano



U630
Line Green



U337
Fuchsia



W1000
Premium White



U114
Yellow



U504
Tyrolean Blue



U963
Dark Grey



U321
China Red

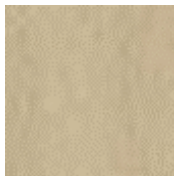


U773
Dusk Grey

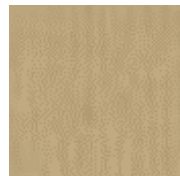


U999
Black

PETSATTU



1.007
Beech



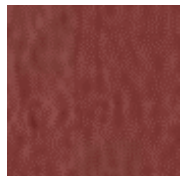
1.040
Alder



1.010
Orange



1.008
Cognac



1.016
Mahogany



1.042
Cherry



1.023
Palisander



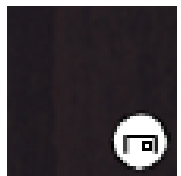
1.031
Walnut



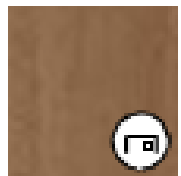
1.033
Wenge



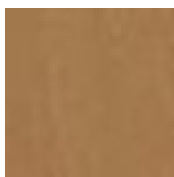
1.043
Black



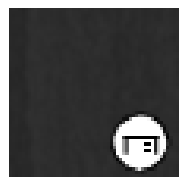
1.032
Colombo



1.076
Havana



1.025
Calvados

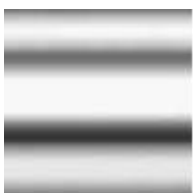


1.06R
Beech grey



1.06S
Slate

METALLIVÄRIT



CR
Chrome



RAL9006
ALU