



TAUKO

NOWY STYL GROUP®

TUOTTEET

Tuoli nelipistejalalla tai lenkkijalalla.
Baarituoli nelipistejalalla tai
lenkkijalalla.
Eri kokoisia ja muotoisia pöytiä.

VERHOILUVAIHTOEHDOT

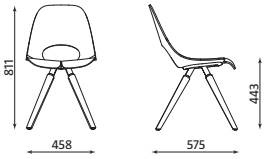
ryhmä 2: Xtreme
ryhmä 4: Synergy

TAKUU

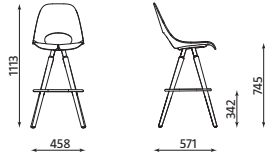
Tuotteilla on 5 vuoden takuu.

1. Dimension/Weight

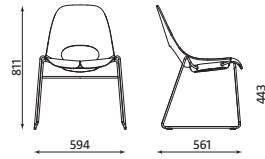
1.1 Basic version



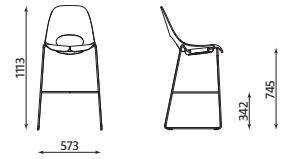
Tauko 4L-LWM
weight: 5,57 kg



Tauko Hocker-LWM
weight: 7,57 kg

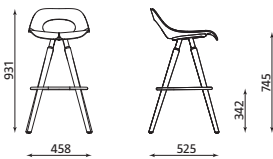


Tauko CFS-ROD
weight: 6,60 kg

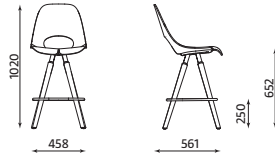


Tauko Hocker CFS-ROD
weight: 8,30 kg

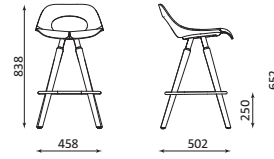
1.2 Configurations



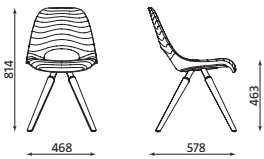
Tauko-LB Hocker-LWM
weight: 7,15 kg



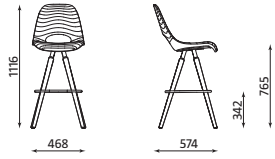
Tauko 7/8-Hocker-LWM
weight: 7,30 kg



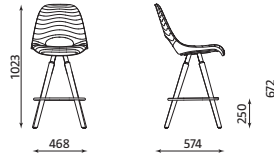
Tauko-LB 7/8-Hocker-LWM
weight: 6,87 kg



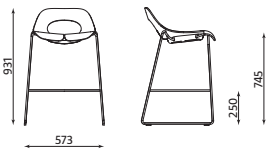
Tauko A-PLUS 4L-LWM
weight: 6,20 kg



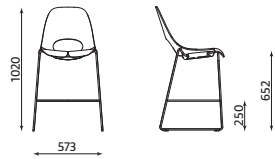
Tauko A-PLUS Hocker-LWM
weight: 7,90 kg



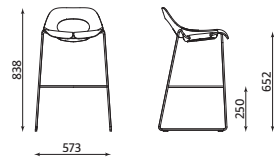
Tauko A-PLUS 7/8-Hocker-LWM
weight: 7,70 kg



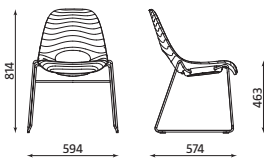
Tauko-LB Hocker CFS-ROD
weight: 7,90 kg



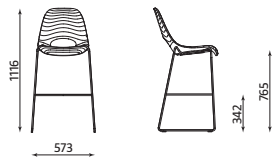
Tauko 7/8 Hocker CFS-ROD
weight: 8,10 kg



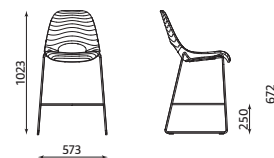
Tauko-LB 7/8 Hocker CFS-ROD
weight: 7,70 kg



Tauko A-PLUS CFS-ROD
weight: 7,10 kg

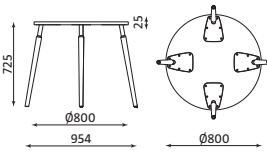


Tauko A-PLUS Hocker CFS-ROD
weight: 8,70 kg

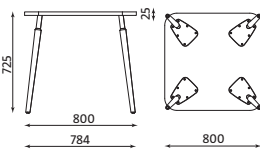


Tauko-LB 7/8 Hocker CFS-ROD
weight: 8,40 kg

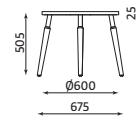
1.3 Tauko table



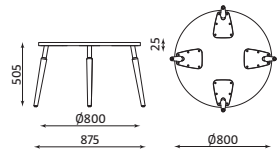
Tauko Table-LWM Ø 800
weight: 16,10 kg



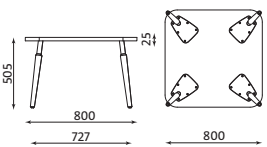
Tauko Table-LWM 800x800
weight: 18,50 kg



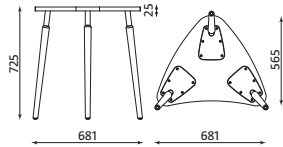
Tauko Coffee Table-LWM Ø 600
weight: 11,20 kg



Tauko Coffee Table-LWM Ø 800
weight: 15,20 kg



Tauko Coffee Table-LWM 800x800
weight: 17,60 kg



Tauko Modular Table-LWM
weight: 9,6 kg

2. Materials/Versions

2.1. Frame

Chair and bar stool with wooden legs (the LWM line).

Frame is made of Ø 32 mm steel tubes, 1,5 mm thick, and a 5 mm thick metal sheet. The metal surface is powder-coated in white colour RAL 9003.

Legs are made of solid wood: natural beech (1.007), stained beech or natural oak (D.007). The wooden surface is covered with water-based wood stain (slightly visible wood grain) and water-based varnish.

Wooden elements are available in 10 different colours.

2 mm thick Ø 16 mm footrest for bar stools is chromium-plated or powder-coated in white colour RAL 9003 and protected with an additional transparent varnish coating.

Under the seat:

- version with a plywood seat and backrest - black plastic cover PP, black (aesthetic function),
 - A-PLUS version - finished with upholstery.
- Stacking: No stacking possibility.

Cantilever chair and bar stool (the CFS-ROD line)

The frame is made of Ø 11 steel bars and a 4 mm thick metal sheet. The frame is chromium-plated or powder-coated in black colour RAL 9005.

Chair

Under the seat:

- version with a plywood seat and backrest - black plastic cover PP,
- A-PLUS version - black plastic cover PP.

Stacking: up to 8 pieces.

Bar stool

Under the seat:

- version with a plywood seat and backrest - black plastic cover PP (aesthetic function),
 - A-PLUS version - finished with upholstery.
- No stacking possibility.

Tables

Frame is made of Ø 32 mm steel tubes, 1,5 mm thick, and a 5 mm thick metal sheet.

Metal frame is powder coated in white colour RAL 9003. The legs are made of natural solid wood: beech (1.007) or oak (D.007).

Tauko Modular Table stacking: up to 3 pieces.

2.2. Seat and backrest (Chairs and bar stools)

Plywood seat and backrest - shell is made of 7-layer plywood, thickness 8 mm. A black felt strip is placed along the gap in the seat.

A-Plus (fully upholstered shell) - the shell is made of 7-layer beech plywood, thickness 8 mm, and covered with cut polyurethane foam of 30 kg/m³ density, 20 mm thickness. Additional decorative stitching; the thread and upholstery are of the same colour.

Selected upholstery types and colours: Xtreme, Synergy.

2.3. Table tops

The 25 mm thick table top is covered with melamine: MA-BI (with the 2 mm ABS edge, laser cut) or MA-MS (with 2 mm ABS edge).

2.4. Glides

The LWM line

Chairs and stools

GB (5 mm PE) - black glides for soft floors.

GBF (5 mm PE plus 3 mm of felt) - black glides for hard floors (as an option).

Tables

GB (5 mm PE) - black glides for soft floors

Without up-charge (as an option).

GBF (5 mm PE plus 3 mm of felt) - black glides for hard floors (as an option).

The CFS-ROD line

GT - transparent glides PC for soft floors

GTF - transparent glides PC with felt for hard floors (as an option).

3. Packaging

The LWM line

Tauko LWM: carton packaging - 1 piece, 8 pieces/pallet (1200x800 mm).

Tauko A-PLUS LWM: carton packaging - 1 piece, 8 pieces/pallet (1200x800 mm).

Tauko Hocker LWM: carton packaging - 1 piece, 8 pieces/pallet (1200x800 mm).

Tauko Hocker A-PLUS LWM: carton packaging - 1 piece, 8 pieces/pallet (1200x800 mm).

Tauko Hocker 7/8 LWM: carton packaging - 1 piece, 8 pieces/pallet (1200x800 mm).

Tauko Hocker 7/8 A-PLUS LWM: carton packaging - 1 piece, 8 pieces/pallet (1200x800 mm).

Table: carton packaging: 1.

Tauko Modular Table: 20 pieces/pallet (1200x800 mm).

Tauko Table: 30 pieces/pallet (1200x800 mm).

Tauko Coffee Table: 36 pieces/pallet (1200x800 mm).

The CFS-ROD line

Tauko CFS-ROD: carton packaging - 4 pieces, 16 pieces/pallet (1200x800 mm).

Tauko A-PLUS CFS-ROD: carton packaging - 4 pieces, 16 pieces/pallet (1200x800 mm).

Tauko Hocker CFS-ROD: carton packaging - 1 piece, 8 pieces/pallet (1200x800 mm).

Tauko Hocker A-PLUS CFS-ROD: carton packaging - 1 piece, 8 pieces/pallet (1200x800 mm).

Tauko Hocker 7/8 CFS-ROD: carton packaging - 1 piece, 8 pieces/pallet (1200x800 mm).

Tauko Hocker 7/8 A-PLUS CFS-ROD: carton packaging - 1 piece, 8 pieces/pallet (1200x800 mm).

VÄRIVAIHTOEHDOT

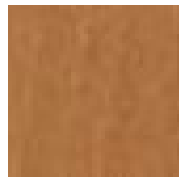
PETSATTU (tuoleille)



1.007
Beech



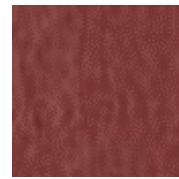
1.040
Alder



1.010
Orange



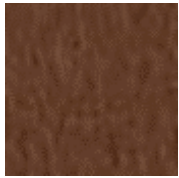
1.008
Cognac



1.016
Mahogany



1.042
Cherry



1.023
Palisander



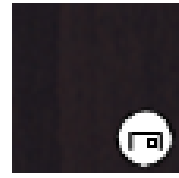
1.031
Walnut



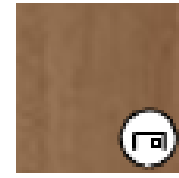
1.033
Wenge



1.043
Black



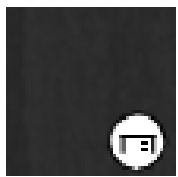
1.032
Colombo



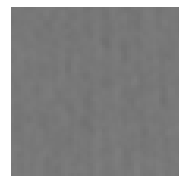
1.076
Havana



1.025
Calvados

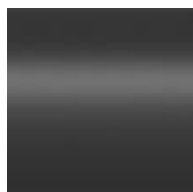


1.06R
Beech grey



1.06S
Slate

METALLIVÄRIT



RAL 9005
Black*



RAL 9003
White*



CR
Chrome

MELAMIINIVÄRIT (pöydille)



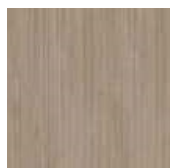
BI
White



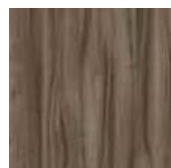
NB
Beech Bright



NH
Maple



NT
Tabac Cherry



NP
Tiepolo Nut



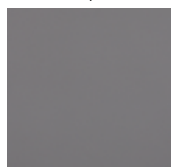
NO
Ovid Elm



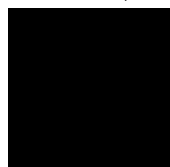
MP
Platinum



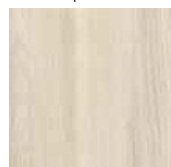
MS
Slate



BZ
GreyBasalt



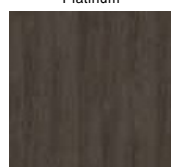
CC
Black



NC
Champagne Hard Maple



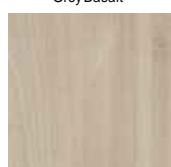
NL
Natural Country Beech



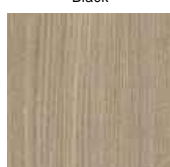
NV
Brown Hickory



MB
White Gray



NJ
Acacia Light



NA
Aragon Oak